

TRANSPORTATION LIGHTING

For Models : All Commercial Vehicles

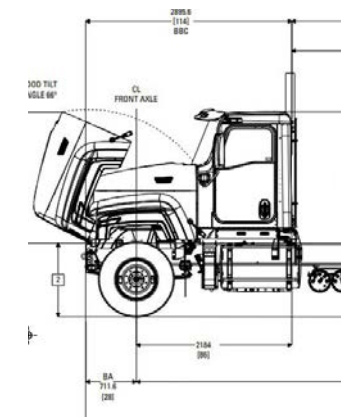
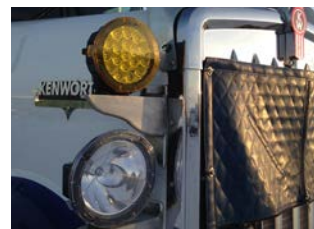


LED | LIGHTING CATALOG



ENGINEERED LIGHTING SOLUTIONS

Vision X lighting fixtures are not merely lighting systems, they are engineered lighting solutions. They provide increased efficiency, increased safety, decreased environmental impact, and decreased costs. Vision X LED lights offer a large increase in energy efficiency over older technologies while also increasing the safety and productivity of the working environment by outputting 80% more light than the fixtures used previously.



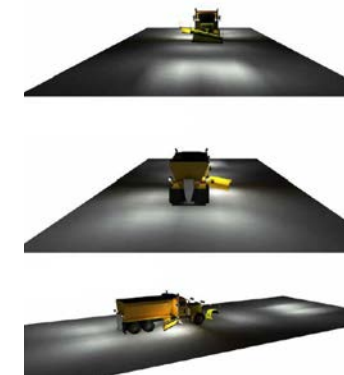
2D BLUEPRINT

Vision X Lighting begins each project with a customer provided list of vehicles to be retrofitted, then gathers the technical information for those vehicles.



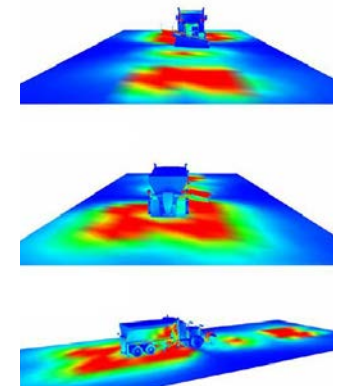
3D MODEL

A 3D model is built to the customer's specifications, then carried over into the rendering.



SIMULATION RENDER

A simulation rendering ensures the final product will meet the customer's lighting requirements.



SOLUTION

Vision X Lighting creates a complete breakdown of the customer's specific needs to meet their lighting and safety requirements.



LONG HAUL TRUCK FITOUT GUIDE



**DRIVING LIGHTING
SEALED BEAM WORK LIGHT**

of Fixtures : **Vehicle Specific**
Location : **Front**
Finish : **Chrome, Black Chrome**
Part # : **XIL-46D**



**MID-LONG RANGE LIGHTING
CANON GEN2 SERIES**

of Fixtures : **Vehicle Specific**
Location : **Front**
Beam Pattern : **10°**
Part # : **CG2-CPM1810** (Mid-Range)
CGS-CPZ610 (Long-Range)



**BACK-UP/ LOAD LIGHTING
VW-SERIES**

of Fixtures : **Vehicle Specific**
Location : **Back**
Housing : **Oval, Round, Square**
Part # : **VW0050640** (Oval)
VWR040540 (Round)
VWS030440 (Square)



**BACK-UP/ LOAD LIGHTING
DURA-SERIES**

of Fixtures : **Vehicle Specific**
Location : **Back**
Beam Pattern : **10/ 40/ 60°**
Part # : **DURA-410** (Dura 4)
DURA-610 (Dura 6)



**BACK-UP/ LOAD LIGHTING
UMX-SERIES**

of Fixtures : **Vehicle Specific**
Location : **Back**
Beam Pattern : **10/ 40/ 60°**
Part # : **XIL-UMX4010** (Round)
XIL-UMX4410 (Square)



FORWARD LIGHTING

Product Information

Project Name:
Date:
Type:

Application

Not everyone gets the luxury of driving to work during the daytime. Upgrading your forward facing lights will allow you to get to your destination safely and help reduce eye-strain for those long hauls.

SPECIFICATIONS

Mechanical Information:

Fixture Weight:	1.95 lbs (0.88kg)
Shipping Weight:	2.9 lbs (1.34kg)
Mounting:	Fits OEM Brackets

Electric Specifications:

Operating Voltage:	9-32V DC
Wattage:	42W
Operating Temp:	-40°C ~ 85°C
Vibration:	60Grms
Connector:	2 Pin Deutsch

Construction:

Housing:	Hybrid Housing
Reflector Finish:	Chrome, Black Chrome
Beam Modes:	Halo, Low, High

LED

LED:	XP-L(CREE)
Amp Draw:	3.5A @12V
Lifespan:	50,000 hr

RATINGS:

DOT	Approved
Ingress Protection:	IP-68



4X6” LED HEADLIGHT

PART #:	FINISH
1 XIL-46D	Chrome
XIL-46DKIT	Chrome
XIL-46DB	Black Chrome
XIL-46DBKIT	Black Chrome



7” LED HEADLIGHT

PART #:	FINISH
XIL7RD	Chrome
XIL-7RDKIT	Chrome
XIL-7RDB	Black Chrome
XIL-7RDBKIT	Black Chrome





FORWARD LIGHTING MID-RANGE

Product Information

Project Name:
Date:
Type:

Application

From 3.7” to 8.7” sizes, each is available in a Long Distance or Multi-LED Full Beam version to shine the light exactly where you need it. The Day-White lighting color allows you to comfortably see the terrain over the unmatched distances. The 25-Lights-In-One cover system allows you to change light pattern and color to fit your driving environments.

SPECIFICATIONS 6.7” MID RANGE DRIVING LIGHT

Mechanical Information:

Fixture Weight:	7.05 lbs (3.19kg)
Shipping Weight:	8.32 lbs (3.77kg)
Mounting:	Single Bolt

Electric Specifications:

Operating Voltage:	9-32V DC
Wattage:	126W
Operating Temp:	-40°C ~ 85°C
Distance to 1 Lux:	1,105 Ft.
Connector:	2 Pin Deutsch

Construction:

Housing:	Hybrid Housing
Finish:	Gloss Black
Lens:	Polycarbonate Lens

LED

LED:	XP-L(CREE)
Amp Draw:	10.5A @12V
Lifespan:	50,000 hr

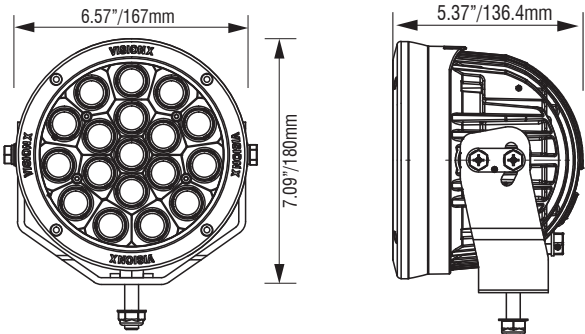
RATINGS:

DOT	Approved
Ingress Protection:	IP-68



PART #:	BEAM
2 CG2-CPM1810 (6.7)	10°
CGS-CPM1810KIT (6.7)	10°
CG2-CPM710 (4.5)	10°
CG2-CPM710KIT(4.5)	10°

2D DRAWING:



FORWARD LIGHTING LONG-RANGE

Product Information

Project Name:
Date:
Type:

Application

From 3.7” to 8.7” sizes, each is available in a Long Distance or Multi-LED Full Beam version to shine the light exactly where you need it. The Day-White lighting color allows you to comfortably see the terrain over the unmatched distances. The 25-Lights-In-One cover system allows you to change light pattern and color to fit your driving environments.

SPECIFICATIONS 6.7” LONG RANGE DRIVING LIGHT

Mechanical Information:

Fixture Weight:	5.73 lbs (2.59kg)
Shipping Weight:	6.82 lbs (3.09kg)
Mounting:	Single Bolt

Electric Specifications:

Operating Voltage:	9-32V DC
Wattage:	70W
Operating Temp:	-40°C ~ 85°C
Distance to 1 Lux:	3,000 Ft.
Connector:	2 Pin Deutsch

Construction:

Housing:	Hybrid Housing
Finish:	Gloss Black
Lens:	Polycarbonate Lens

LED

LED:	XP-L(CREE)
Amp Draw:	5.83A @12V
Lifespan:	50,000 hr

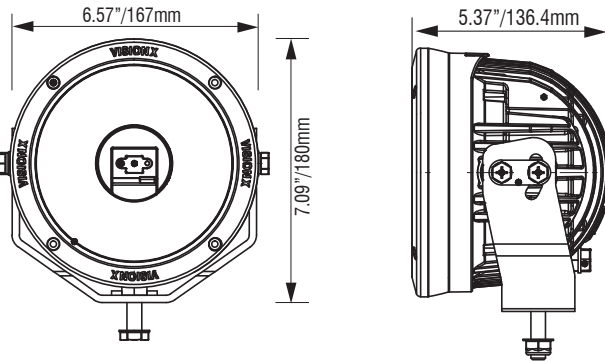
RATINGS:

DOT	Approved
Ingress Protection:	IP-68



PART #:	BEAM
2 CGS-CPZ610 (6.7)	10°
CGS-CPZ610KIT (6.7)	10°
CG2-CPZ110 (4.5)	10°
CG2-CPZ110KIT (4.5)	10°

2D DRAWING:





REVERSE | LOAD LIGHTING

Product Information

Project Name:
Date:
Type:

Application

The Duralux Series gives more output than 100W Halogen lights while drawing much less power and reducing wear on associated components. Additionally, the Duralux was designed with fleet vehicles in mind, reducing cost, energy consumption, and boosting output at an attractive price.

SPECIFICATIONS DURALUX 4 LED

Mechanical Information:

Fixture Weight:	1.50 lbs (0.68kg)
Shipping Weight:	2.6 lbs (1.18kg)
Mounting	Single Bolt M6

Electric Specifications:

Operating Voltage:	11 - 65VDC
Wattage:	20W
Operating Temp:	-40°C - 80°C
Vibration:	15.6Grms
Connector:	2 Pin Deutsch

Construction:

Housing:	Die-Cast 6061 Aluminum
Finish:	Gloss Black
Lens:	Polycarbonate Lens

LED

LED:	LG
Amp Draw:	1.6A @12V
Lifespan:	50,000 hr

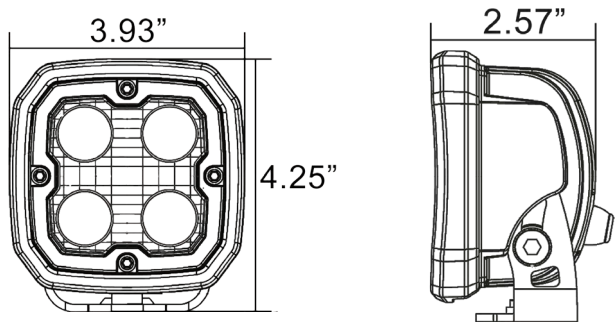
RATINGS:

EMC Emission:	(CISPR 25) Edition 3.0 (2008-03) Class 3
Ingress Protection:	IP-68, IP69k



ITEM #:	BEAM PATTERN
3 DURA-410	Flood 10°
DURA-440	Flood 40°
DURA-460	Flood 60°

2D DRAWING:



FLUSH MOUNT
AVAILABLE



REVERSE | LOAD LIGHTING

Product Information

Project Name:
Date:
Type:

Application

Available in three different housing sizes and three different beam patterns, the Duralux Series is one of the most adaptive fixtures made by Vision X. The Die-Cast Aluminum housing combines durability with affordability for a wide variety of applications.

SPECIFICATIONS DURALUX 6 LED

Mechanical Information:

Fixture Weight:	2.63 lbs (1.19kg)
Shipping Weight:	3.8 lbs (1.72kg)
Mounting	Single Bolt M6

Electric Specifications:

Operating Voltage:	11 - 65VDC
Wattage:	30W
Operating Temp:	-40°C - 80°C
Vibration:	60 Grms
Connector:	2 Pin Deutsch

Construction:

Housing:	Die-Cast 6061 Aluminum
Finish:	Gloss Black
Lens:	Polycarbonate Lens

LED

LED:	LG
Amp Draw:	2.5A @12V
Lifespan:	50,000 hr

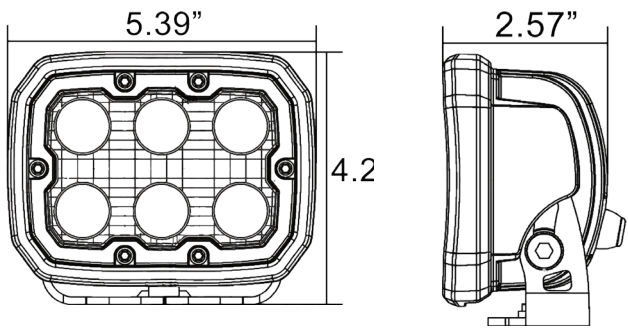
RATINGS:

EMC Emission:	(CISPR 25) Edition 3.0 (2008-03) Class 3
Ingress Protection:	IP-68, IP69k



ITEM #:	BEAM PATTERN
3 DURA-610	Flood 10°
DURA-640	Flood 40°
DURA-660	Flood 60°

2D DRAWING:



FLUSH MOUNT
AVAILABLE



REVERSE | LOAD LIGHTING

Product Information

Project Name:
Date:
Type:

Application

The VW-Series LED Light Duty offers outstanding light output in a functional design which can be easily adjusted with the single bolt bracket. High quality construction and components enable VW-Series LED Light Duty to withstand vibration up to 15.6 Grms. Built-in reverse polarity protection helps prevent accidental damage caused by incorrect installation. VW-Series LED Light Duty work lighting is a high value, versatile range designed for many light duty commercial applications.

SPECIFICATIONS VW SERIES

Mechanical Information:

Fixture Weight:	1.50 lbs (0.68kg)
Shipping Weight:	2.6 lbs (1.18kg)
Mounting	Single Bolt M6

Electric Specifications:

Operating Voltage:	11 - 65VDC
Wattage:	20W
Operating Temp:	-40°C - 80°C
Vibration:	15.6Grms
Connector:	2 Pin Deutsch

Construction:

Housing:	Die-Cast 6061 Aluminum
Finish:	Gloss Black
Lens:	Polycarbonate Lens

LED

LED:	LG
Amp Draw:	1.6A @12V
Lifespan:	50,000 hr

RATINGS:

EMC Emission:	(CISPR 25) Edition 3.0 (2008-03) Class 3
Ingress Protection:	IP-68, IP69k



OVAL



ROUND



SQUARE

ITEM #:	BEAM	LEDs
3 VW0050640 (Oval)	40°	6
VW0050840 (Oval)	40°	8
VWR040540 (Round)	40°	5
VWR050640 (Round)	40°	6
VWR050940 (Round)	40°	9
VWS030440 (Square)	40°	4
VWS040540 (Square)	40°	5
VWS050640 (Square)	40°	6
VWS050940 (Square)	40°	9



REVERSE | LOAD LIGHTING

Product Information

Project Name:
Date:
Type:

Application

Simple quick connect wiring allows for one time wiring and no further electrical wiring to change the fixture. Industry leading LED light output, size, weight and reliability for reduced unscheduled maintenance.

SPECIFICATIONS UMX SERIES

Mechanical Information:

Fixture Weight:	2.65 lbs (1.2kg)
Shipping Weight:	3.56 lbs (1.61kg)
Mounting	Single Bolt M6

Electric Specifications:

Operating Voltage:	11 - 65VDC
Wattage:	35W
Operating Temp:	-40°C - 80°C
Vibration:	15.6Grms
Connector:	2 Pin Deutsch

Construction:

Housing:	Die-Cast 6061 Aluminum
Finish:	Gloss Black
Lens:	Polycarbonate Lens

LED

LED:	LG
Amp Draw:	1.6A @12V
Lifespan:	50,000 hr

RATINGS:

EMC Emission:	(CISPR 25) Edition 3.0 (2008-03) Class 3
Ingress Protection:	IP-68, IP69k

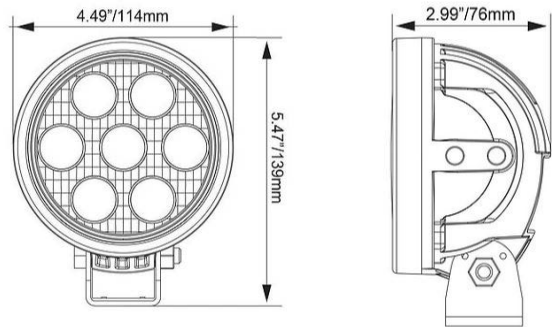


XIL-UMX40xx

XIL-UMX44xx

ITEM #:	BEAM PATTERN
3 XIL-UMX4010 (Round)	10°
XIL-UMX4040 (Round)	40°
XIL-UMX4060 (Round)	60°
XIL-UMX4410 (Square)	10°
XIL-UMX4440 (Square)	40°
XIL-UMX4460 (Square)	60°

2D DRAWING:





ACCESSORIES

Product Information

Project Name:
Date:
Type:

Video Extreme Light Kit:

- Kit Available with 7" Monitor
- Glare Blocking Shield
- Infrared Model Available

Fixture Dimensions:	4.71" x 6.28" x 3.14"
Fixture Weight:	2.43lbs (1.10kg)
Wattage:	30W
Amp Draw:	2.5A @12V
Vibration Rating:	15.6 Grms
Application:	Video Back-Up System
Lifespan:	50,000hr
Operating Temp:	-40°C - 80°C

RATINGS:

EMC Emission:	(CISPR 25) Edition 3.0 (2008-03) Class 3
Ingress Protection:	IP-68, IP69k



ITEM #:	LED
VEL-4460CA72SS	White
VEL-CAMMON7KIT	White
VEL-4460CA72SS. IR850	IR
VEL-M7 (7" Monitor)	--

4.3" Utility Flood Light:

- 120° of Light Output
- 32 Wide Angle LEDs
- Flood Light for Universal Applications with Ultra Lightweight, Bright Design

Fixture Dimensions:	3.52" x 1.91" x 0.91"
Fixture Weight:	0.41lbs (0.19kg)
Wattage:	6W
Amp Draw:	0.5A @12V
Vibration Rating:	8.6 Grms

RATINGS:

EMC Emission:	(CISPR 25) Edition 3.0 (2008-03) Class 3
Ingress Protection:	IP-68, IP69k



ITEM #:	COLOR
XIL-UF32	White
XIL-UF32A	Amber
XIL-UF32B	Blue
XIL-UF32G	Green
XIL-UF32R	Red
XIL-UF32P	Purple



ACCESSORIES

Product Information

Project Name:
Date:
Type:

Strip Lighting Soft Touch

Touch Activated Strip Light Available in 7.5" and 12"

Fixture Dimensions:	7.44" x 0.92" x 0.59" 11.93" x 0.92" x 0.59"
Wattage:	2W (7.5") 4.2W (12")
Amp Draw:	0.16A @12V (7.5") 0.35A @12V (12")
Vibration Rating:	15.6 Grms

RATINGS:

Ingress Protection:	IP-68
---------------------	-------

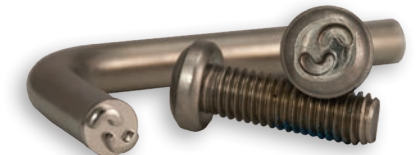


ITEM #:	SIZE
XIL-SL7.5	7.5"
XIL-SL12	12"
XIL-ST7.5	7.5"
XIL-ST12	12"

Security Bolts

Security hardware reduces theft by requiring a special tool to remove.

- Fits Virtually Any Bolt
- 304 Stainless Steel Construction
- Sold as 2 Bolts with 1 Tool



ITEM #:	SIZE
XIL-SB0615	M6 X 15
XIL-SB0620	M6 X 20
XIL-SB0815	M8 X 20
XIL-SB0820	M8 X 20
XIL-SB0825	M8 X 25

Security Nuts

Security hardware reduces theft by requiring a special tool to remove.

- Fits Virtually Any Bolt
- Plated Carbon Steel Construction
- Sold as 2 Bolts with 1 Tool



ITEM #:	SIZE
XIL-SN06	M6
XIL-SN08	M8
XIL-SN10	M10
XIL-SN12	M12



3 YEAR WARRANTY

VISIONXUSA.COM

BY VISION X LIGHTING

VISION X USA

1601 Boundary Blvd
Auburn WA 98001
United States of America
P: 253-218-2900
www.vxindustrial.com



VISION X ASIA

23-7 Dongtansandan
9-gil Dongtan-myeon Hwaseong-si
Gyeonggi-do 18487, Korea
P: 82-32-515-4814
www.visionxlighting.com