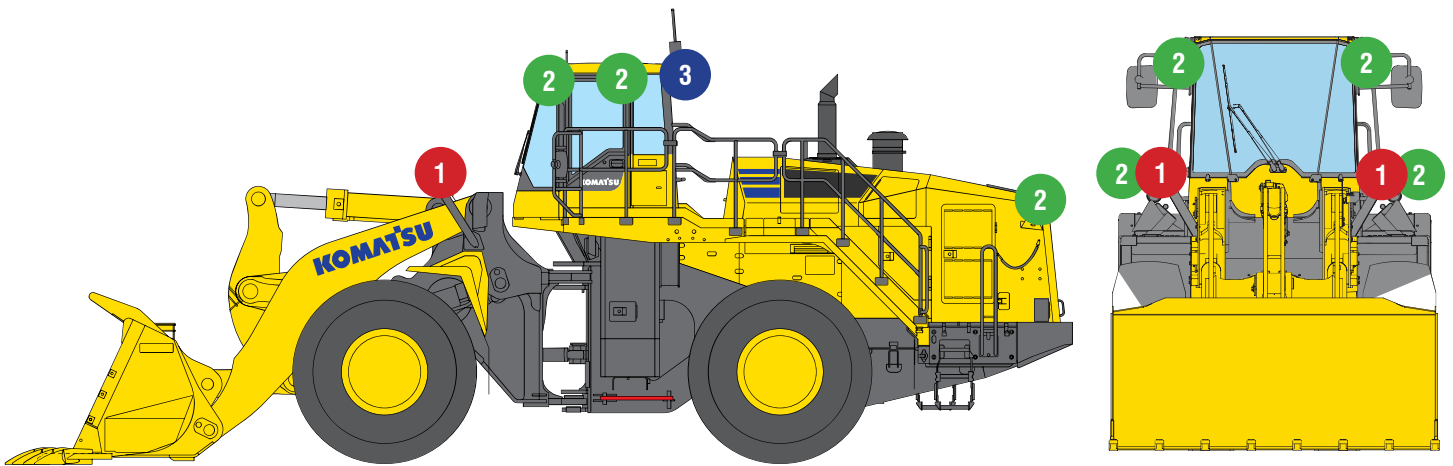




KOMATSU WA800

- ALL MODELS -



1 RXP12E3065T

5" Wide Elliptical LED Work Light

2x Left & Right of Hydraulics Inner Forward Facing



2 RXP1260T

5" Wide Flood LED Work Light

2x Left & Right Front Top of Cabin Forward Facing
 2x Left & Right Rear Top of Cabin Rear Side Facing
 2x Left & Right of Hydraulics Inner Forward Facing
 2x Left and Right Rear Chassis



3 DURA-M460

2" Round Flood LED Pod

2x Rear Left & Right of Cabin Deck Facing

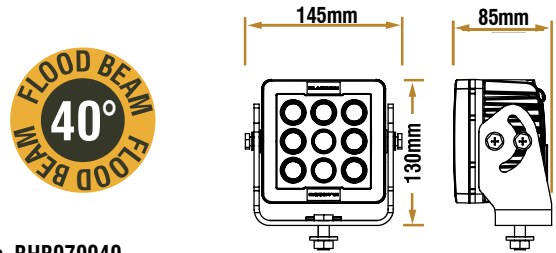


KOMATSU WA800

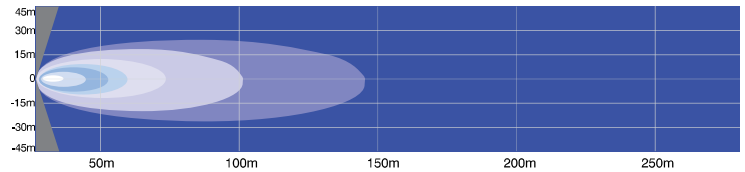
- ALL MODELS -

BHB070940

LEDs	9 x 7W Cree
Light Colour Temp	5700K
Effective Lumens	5734
Raw Lumens	7200
Voltage	9-32V
Amperage	5.26A @ 12V
Wattage	63W

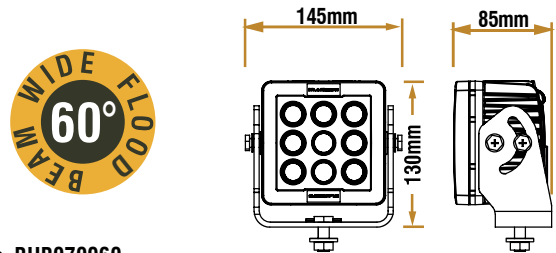


Part No. BHB070940

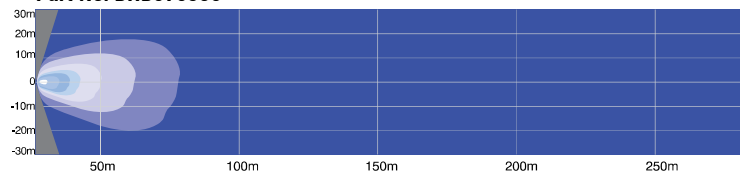


BHB070960

LEDs	9 x 7W Cree
Light Colour Temp	5700K
Effective Lumens	5734
Raw Lumens	7200
Voltage	9-32V
Amperage	5.26A @ 12V
Wattage	63W



Part No. BHB070960

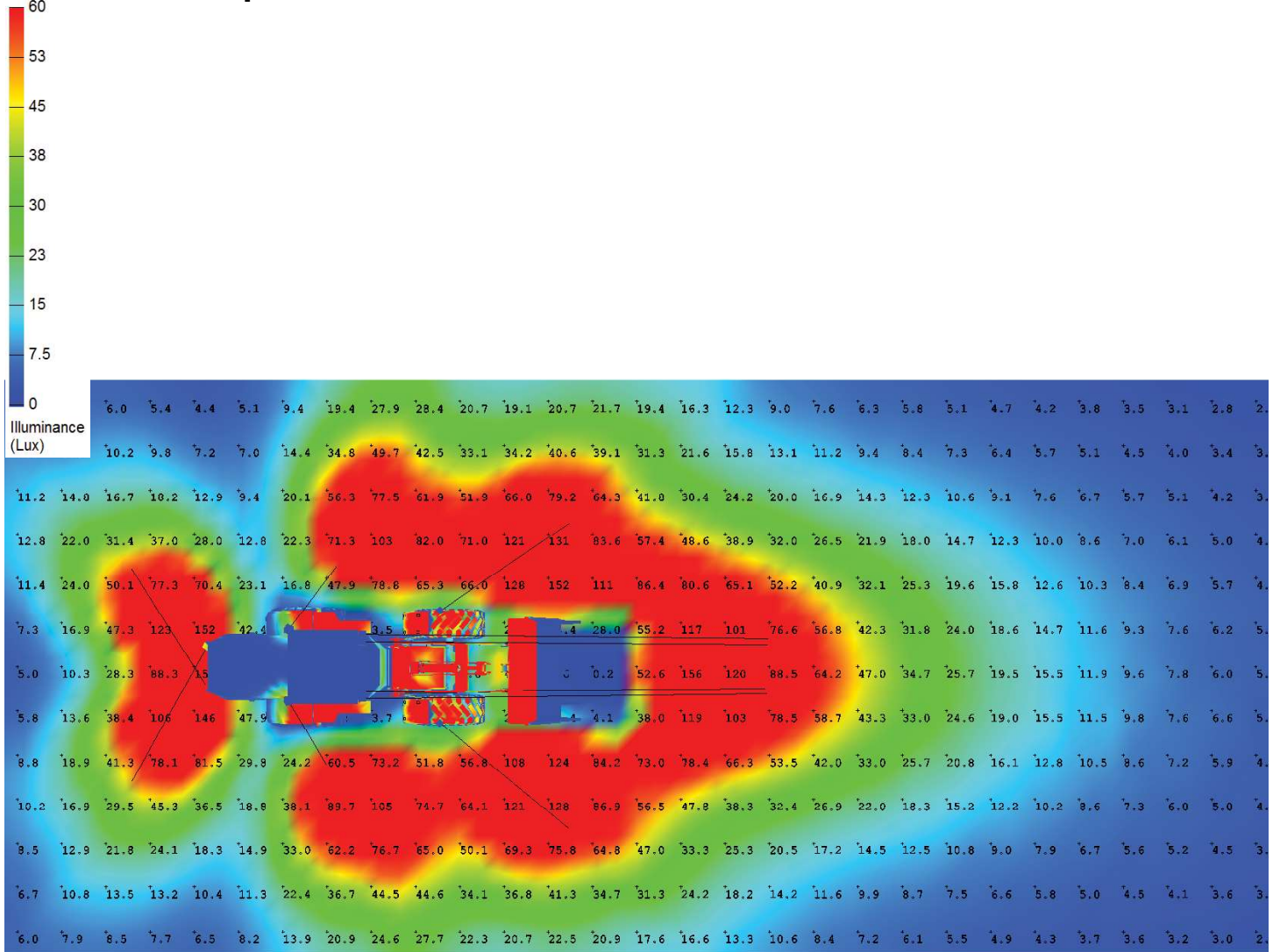




KOMATSU WA800

- ALL MODELS -

Pseudo Color Top Down

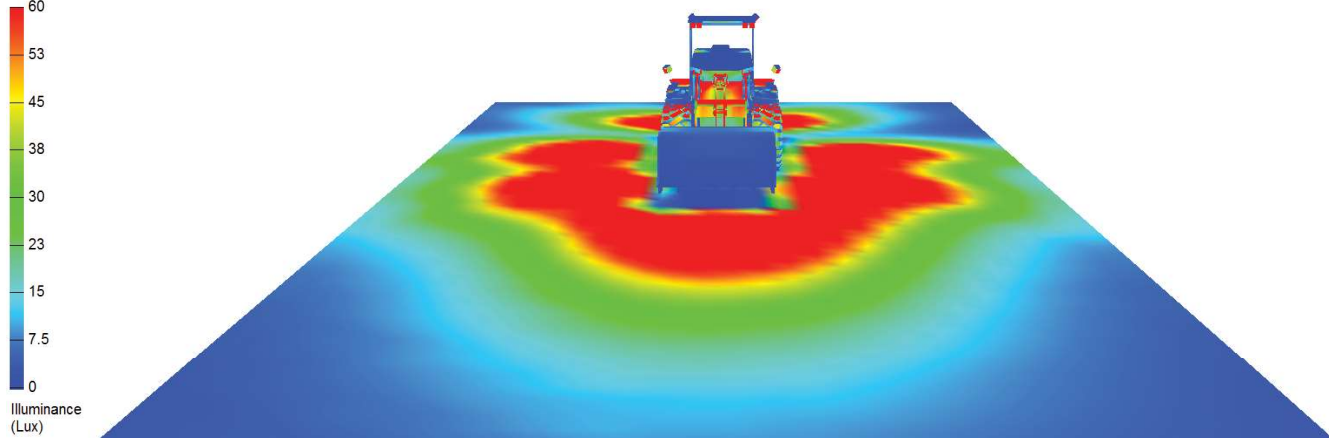




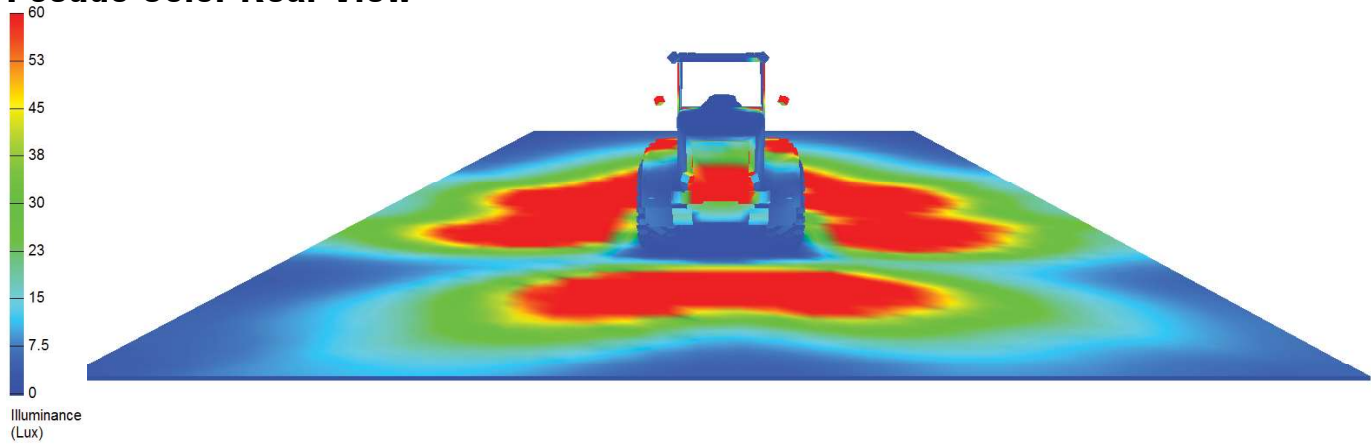
KOMATSU WA800

- ALL MODELS -

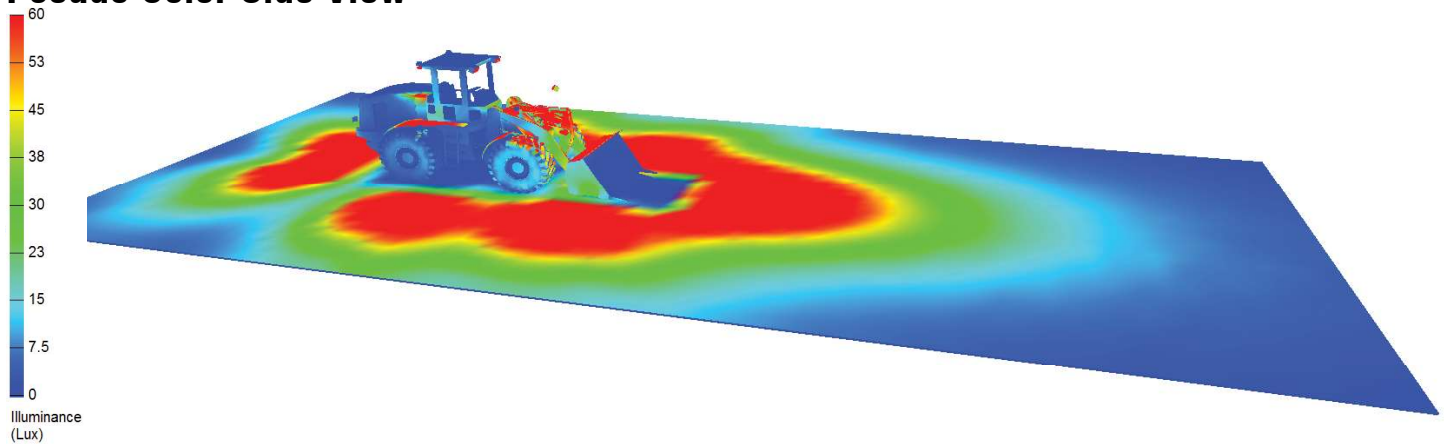
Pseudo Color Front View



Pseudo Color Rear View



Pseudo Color Side View

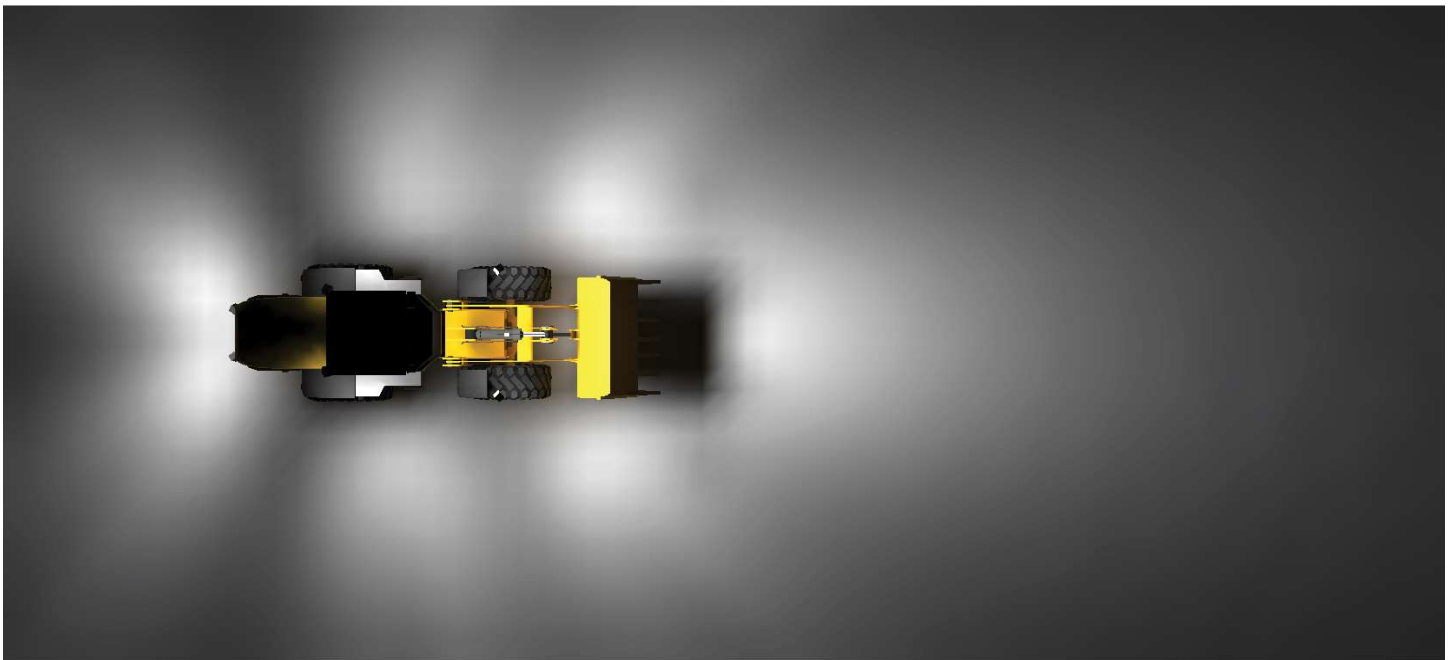




KOMATSU WA800

- ALL MODELS -

Simulation Color Side View





KOMATSU WA800

- ALL MODELS -

Simulation Color Front View



Simulation Color Rear View



Simulation Color Side View

