



KOMATSU HD785

1-2 BHB07053065



4.5" SQUARE FLOOD LED
BHB-SERIES WORK LIGHT

1 & 2 Center Two Front Headlights
Forward Facing

3-4 BHB070540



4.5" SQUARE FLOOD LED
BHB-SERIES WORK LIGHT

3 & 4 Second From Inner Headlights
Forward Facing

5-8 BHB070560



4.5" SQUARE FLOOD LED
BHB-SERIES WORK LIGHT

5 & 6 Third From Inner Headlights
Forward Facing
7 & 8 Left and Right Sides of Deck
Side Facing

9-10 DURA-460A



4.5" SQUARE FLOOD LED
DURA-SERIES WORK LIGHT

9 & 10 Outer Two Indicator Lights
Forward Facing

11-12 TAIL LIGHT KIT



TAIL LIGHT REPLACEMENT
INCLUDES 3 XIL-U40

11 & 12 Tail Light Replacement
Rear Facing



DURA-460A

BHB070560

BHB070540

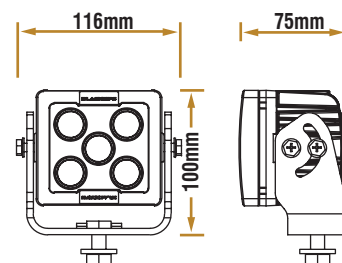
BHB07053065



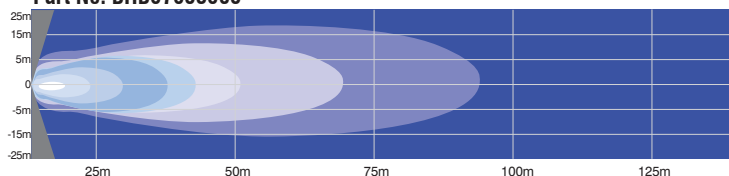


BHB07053065

LEDs	5 x 7W
Light Colour Temp	5700K
Effective Lumens	3305
Raw Lumens	4000
Voltage	9-32V
Amperage	2.92A @ 12V
Wattage	35W

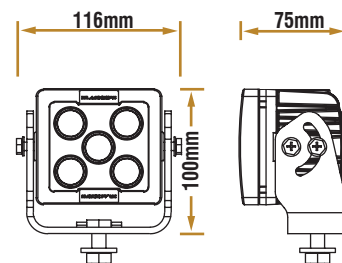


Part No. BHB07053065

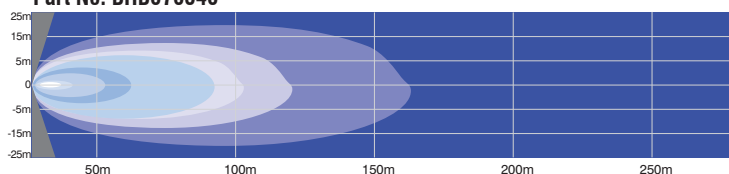


BHB070540

LEDs	5 x 7W
Light Colour Temp	5700K
Effective Lumens	3305
Raw Lumens	4000
Voltage	9-32V
Amperage	2.92A @ 12V
Wattage	35W

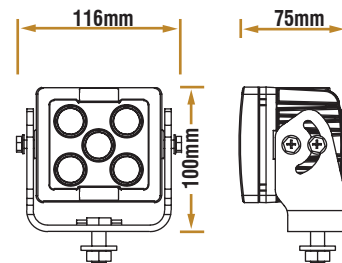


Part No. BHB070540

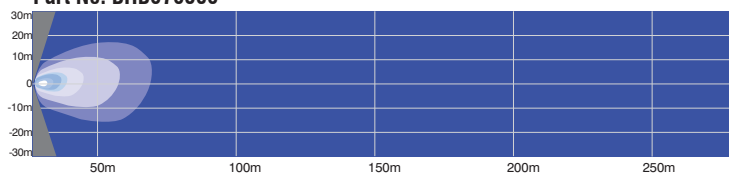


BHB070560

LEDs	5 x 7W
Light Colour Temp	5700K
Effective Lumens	3305
Raw Lumens	4000
Voltage	9-32V
Amperage	2.92A @ 12V
Wattage	35W



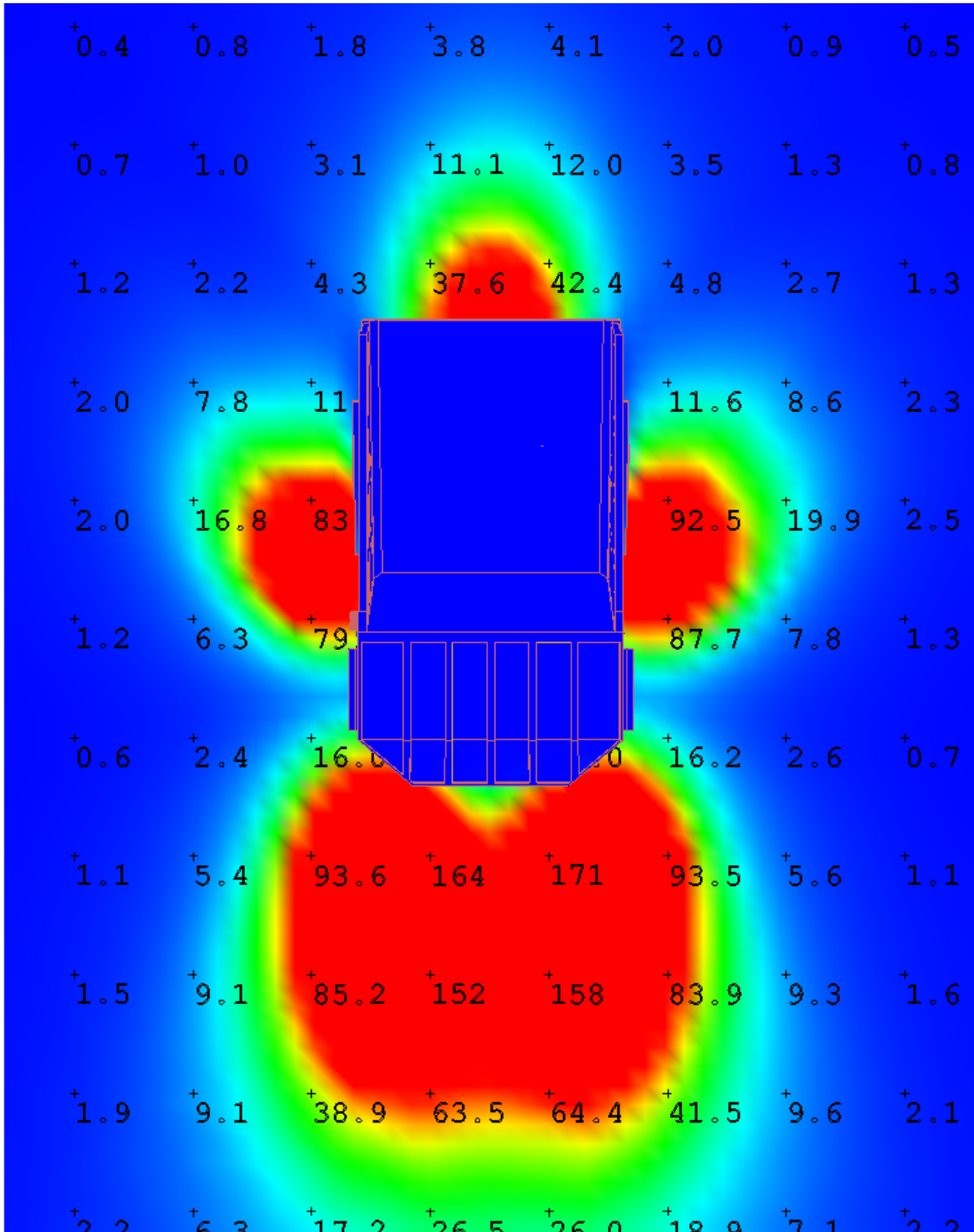
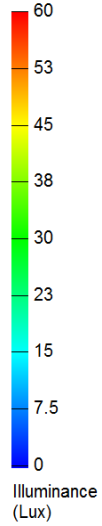
Part No. BHB070560





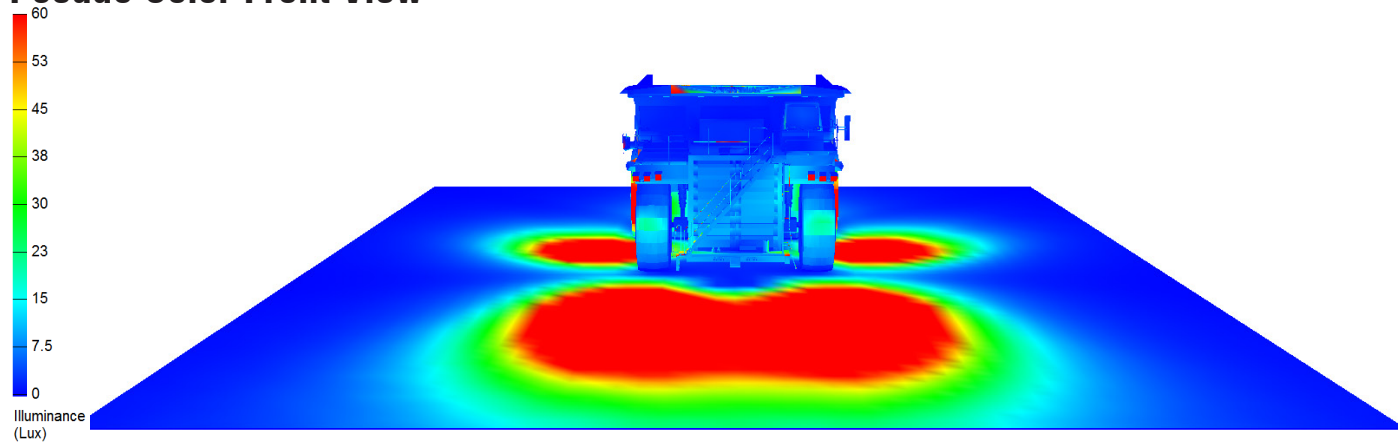
KOMATSU HD785

Pseudo Color Top Down

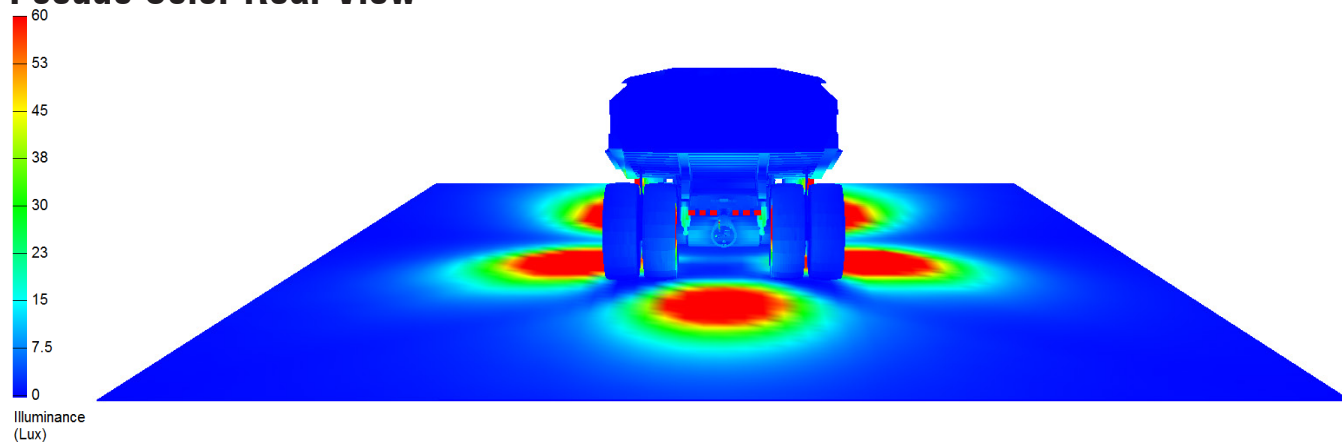




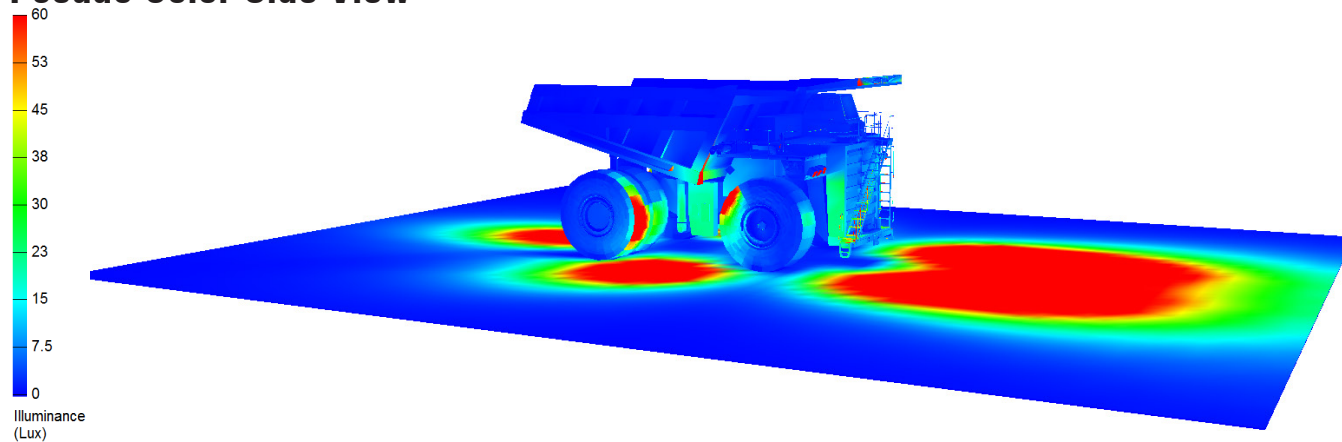
Pseudo Color Front View



Pseudo Color Rear View



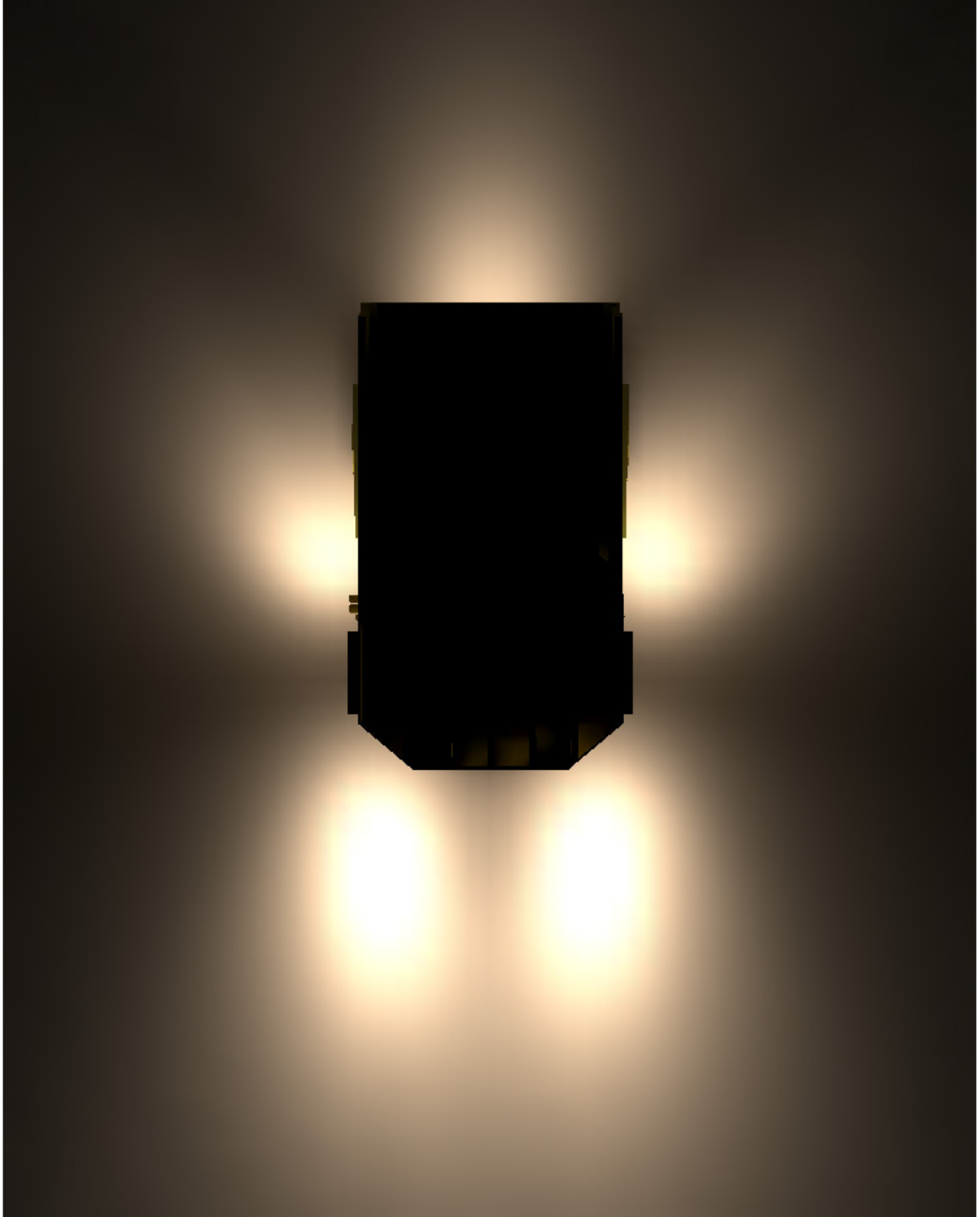
Pseudo Color Side View





KOMATSU HD785

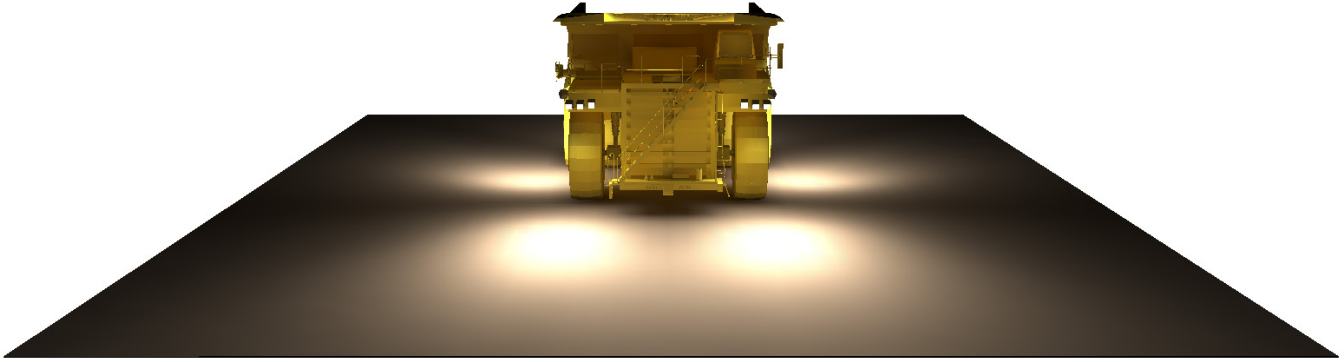
Simulation Color Side View



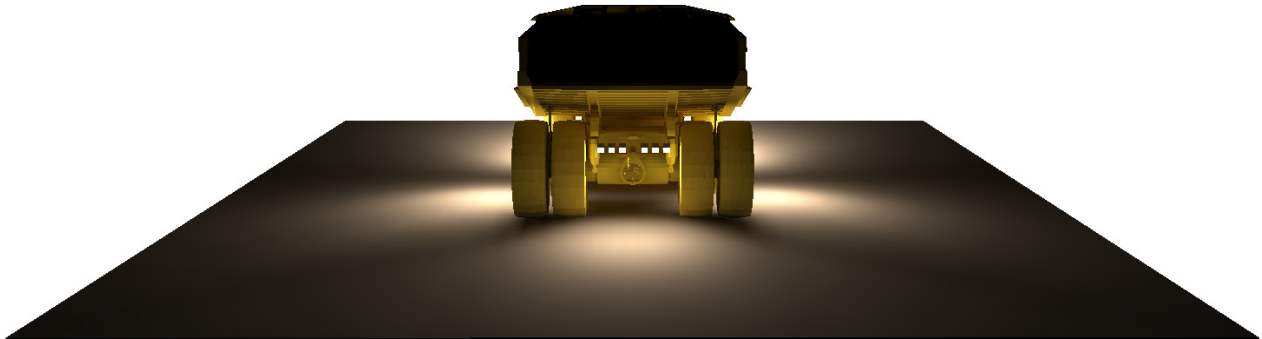


KOMATSU HD785

Simulation Color Front View



Simulation Color Rear View



Simulation Color Side View

